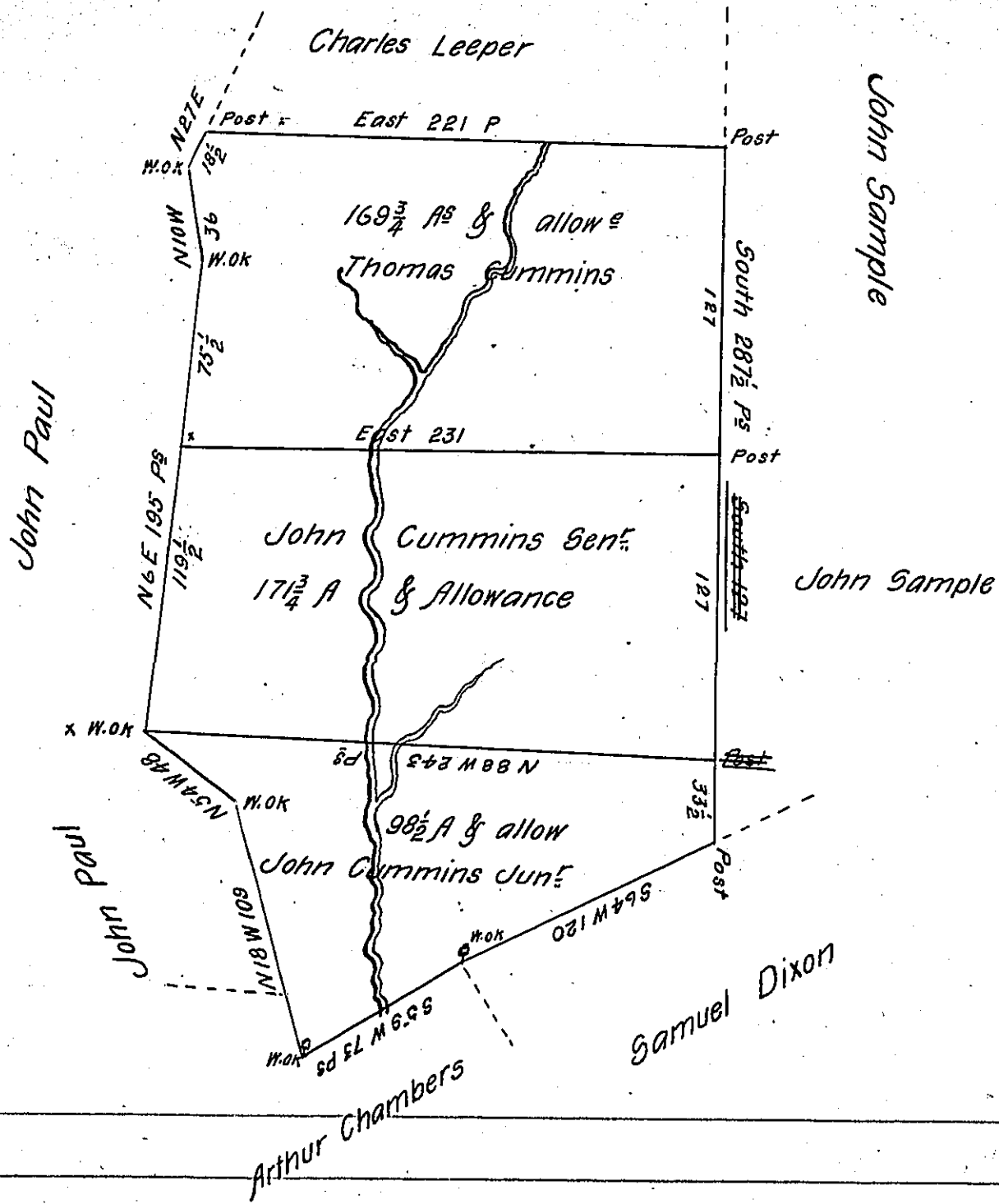


169 $\frac{3}{4}$ on wt to Thomas Cummins 13th Dec^r 1773
 171 $\frac{3}{4}$ Do to John Cummins Sen^r Ditto
 98 $\frac{1}{2}$ Do to Ditto Do Jun^r
 Total 440 & allowance



Survey'd to John Cummins Senior on the 11th May 1786, the above Described Tract of One hundred and seventy one acres & three quarters of an acre & allowance of six P^r Cent. Situate on a branch of Plumb creek about six miles to the East of the Old Kittanning path, about four miles from where it empties into Plumb creek in Westmoreland County.

By warrant of the 13th December 1773.

Joshua Elder D. S.

allowed P. Surv^r Gen^l

John Lukens Esq^r S. Gen^l

IN TESTIMONY that the above is a copy of the original remaining on file in the Department of Internal Affairs of Pennsylvania, made conformably to an Act of Assembly approved the 16th day of February, 1833, I have hereunto set my Hand and caused the Seal of said Department to be affixed at Harrisburg, this twenty first day of July 1904.

James D. Brown
 Secretary of Internal Affairs.